

CERTIFICATE OF CONSTANCY OF PERFORMANCE

N° 2822-UKCA-CPR-0230

In compliance with Regulation 2020 N°1359 of the construction Products (EU exit) Regulation 2020, it was established that the construction product:

Product	Thermal insulation products for buildings - Factory made mineral wool (MW) products
Reference of the product	Non coated Stone Wool Thermal Insulation Boards
Placed on the market by or for	ERYAP GRUP MINERAL YALITIM MALZ. SAN. VE TIC. A.Ş. Kısıklı Mah. Hanımseti Çıkmazı Sk. No:4/2 34692 Üsküdar, İstanbul TÜRKİYE
and produced in the manufacturing plant located in	2. OSB 2. Yol No: 24 54300 Hendek, Sakarya TÜRKİYE

is submitted by the manufacturer to a factory production control, and that the approved certification body Efectis UK/Ireland, has performed the initial type-testing for the relevant characteristics of the product, the initial inspection of the factory and of the factory production control and performs the continuous surveillance, assessment and approval of factory production control.

This certificate attests that all provisions concerning the assessment and verification of constancy of performance and the performance, described in Annex ZA of the standard **EN 13162:2012+A1:2015** under system 1 are applied, and that the product(s) fulfil(s) all the prescribed requirements set out above.

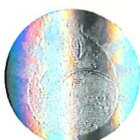
This certificate, first issued on **04th of July 2025**, remains valid as long as the test methods and/or factory production control requirements included in the harmonised standard, used to assess the performance of the declared characteristics, do not change, and the product and the manufacturing conditions in the plant are not modified significantly.

This certificate allows the manufacturer, its mandatories or its distributors, stated in the United Kingdom Economic Area, to affix the UKCA marking.

Certificate established at Belfast on: **04th of July 2025**.

By the Certification Technical Director,


Daniel JOYEUX
Certification Technical Director



Approved body
Nr 2822